

KNYSNA



GEO PARKES & SONS

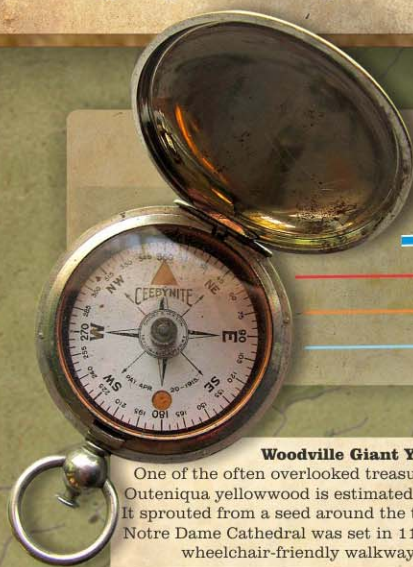
TIMBER ROUTE

Bringing the magnificence of Knysna timber to your home...

Suppliers of fine Indigenous timber, pine logs and Eucalyptus logs since 1892

Roads & Trails

- National Roads
- Rural Roads
- Forest Roads
- Outeniqua Trail
- Cycling Trails
- Cycling / Horse Trails
- Day Walks / Short Walks



Woodville Giant Yellowwood

One of the often overlooked treasures of this area. This giant Outeniqua yellowwood is estimated to be around 850 years old. It sprouted from a seed around the time the first stone of Paris's Notre Dame Cathedral was set in 1163. There are ablutions and wheelchair-friendly walkways through the forest.

Island Lake & Island Lake Picnic Site

The 150ha Island Lake is the first of the chain of lakes and owes its name to the small island located in its centre.

Bo-Langvlei

Formed when the sea level was much higher and the gully between dunes was inundated.

Swartvlei

This famous estuary covers some 1100ha and is the largest and deepest of the lakes. Giving life to the town of Sedgefield, it is a veritable birding enthusiast and salt water fisherman's paradise.

Rondevlei

143 Ha. An old inland lake inundated with seawater. Very important habitat for several rare bird species.

Seven Passes Road

This 75 km historic and beautiful road was completed in 1883, crossing numerous rivers and gorges.

KARATARA FOREST

Jubilee Creek
A lovely picnic spot on the banks of a creek in the deep forest. A day-walk follows old mining trails to an ice cold swimming hole. Have a look at old mineshafts, tunnels and adits hidden in the forest.

Drunkelders

A challenging path winds its way down into a hidden and spectacular kloof. Spend the day listening to the amber water of the Gouba River rushing over falls and rapids and reverberating against the concave rock walls.

Groenvlei

This is the only freshwater lake in the system and was formed years ago when it was cut off from the ocean. It is unique in that it has no in or outflow and is entirely fed from underground water sources. It also gives this section of the lake system the unique characteristic of boasting both fresh- and salt lake fish species. Good examples of the white stinkwood tree can be seen alongside the lake.

MILLWOOD

Milwood Mine, Museum & Coffee Shop

Experience the history of the 1887 gold rush at Milwood Mine. These are the last remaining building of a once thriving village that mushroomed up a century ago around the Knysna gold rush.



King Edward Big Tree & Picnic Spot

Visit this famous old Yellowwood tree. One of the giants of the forest and icon of Knysna. Day permits for elephant walks available at tree and Diepwalle.

Dalene Matthee Big Tree and Memorial

An 800 year old Outeniqua Yellowwood, made famous by writer Dalene Matthee. Also the start of the 'Circles in a Forest' day-walk, following an old mining path along the creek.

RHEENENDAL

The Knysna

The brig 'Knysna' was the largest ship ever to be constructed on the Knysna estuary. It was completed in 1831 on the upper reaches of the Knysna-river, using the ample supply of locally available timber.



Knysna Elephants

The Knysna forest elephants are part of the history of Knysna - part of the mystique and magic of the forests where they have roamed for hundreds of years. They are unique, not in the biological sense, but because they are the southernmost elephants in the world and the only free ranging elephants in South Africa. (Read more on opposite side of map...)



33°56'30.12"S
23°9'31.91"E

DIEPWALLE

Diepwalle (Deep Walls)

At the heart of the Knysna Forest lies the Diepwalle Camp and forest station. Have tea and a snack or visit the Forest Legends Museum, providing a memorable exhibit of Knysna's Timber history. Stay over at the timber camping decks, right inside the forest adjacent to the camp.

Elephant Walk Red Route

7km

Terblans Walk Deep Forest 'wet'

6.5km

Elephant Walk White Route

8km

FISANTEHOEK FOREST

Garden of Eden and Harkerville Routes

Some of the best hiking and cycling trails in South Africa, as well as wheelchair friendly forest access. Permits for forest access available on site and for cycling trails from SANParks offices on Thesen Island.

R339

KNYSNA

Thesen Island (Paarden Island)

Originally known as Paarden Island, this site was home to the old Thesen's Sawmill built in 1924. The original Knysna Harbour and jetty can still be seen as well as the remains of the narrow gauge tracks where the 'Coffee Pot', Knysna's local steam train, used to deliver timber to the harbour from the Knysna forest. It was alongside this jetty in Thesen's Boat Yard that the famous yacht 'Albatros' was built, winning the first Cape to Rio yacht race in 1970.

Belvidere Church

The beautiful Holy Trinity Church in Belvidere was consecrated on 5 October 1855, making it one of the oldest buildings in Knysna.



BELVIDERE

BRENTON

HEADS

NOETZIE

Stinkwood *Ocotea bullata*

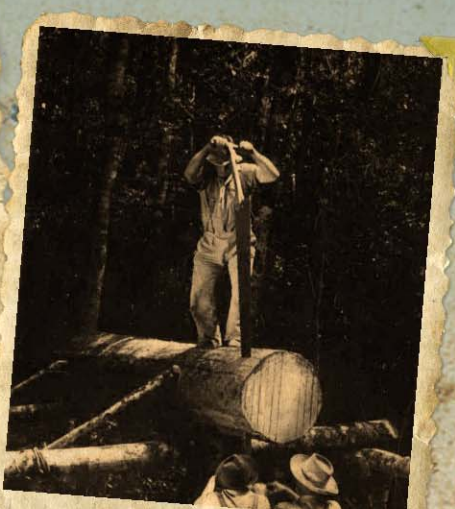
Medium-tall to tall; up to 25 - 30m. Trunk long and cylindrical, but develops flutings and plank buttresses at maturity, often several-stemmed from an old stump. Bark of young stems grey with white and orange patches, smooth with transverse ridges and corky spots; turning brown, rough and flaky with age. Crown dense, rounded. Abundant in wet mountain forests, but taller in the moist forest type.

White Pear *Apodytes dimidiata*

Small to tall, up to 25m. Trunk long, and fluted on drier sites, straight and cylindrical on moist sites. Bark whitish, with grey, pale brown and orange coloured patches, smooth and fine transverse ridges. Old trunks often develop water shoots. Crown small, but always dominant, usually draped with birch lichen. Common in dry and medium moist forests.

Ironwood *Olea capensis*

Medium tall to very tall trees, 15 - 35m. Trunk long, straight and cylindrical. Bark grey, striated, with corky spots. Occasionally found with thick corky rings of "crocodile skin". Old trunks often show a black dis-colouration (due to slime flow from a bark wound). Crown very large and heavy, dominating the upper canopy. Principle tree of all dry and moist forests.



A pit saw in action

Knysna Town

The St. Georges Anglican Church houses many timeless examples of the area's woodwork heritage. The beautiful lectern was donated by Howard Parkes and carved by his niece and the church was made in a small workshop at the Crag.

Woodmill Lane

With original Stinkwood window frames - Telkom Office

Parkes Shop

Photograph history of the Knysna timber industry.

Milwood House

Museum - Timber history display and antique machinery.

The Coffee Pot

Knysna's own railway

The Heads

Not many people know that Knysna had its own little railway from 1907 to 1949. The over 1000m railway from Knysna to the forest and passengers from Knysna to the forest and passengers from Knysna to the forest can still be seen on Thesen Island jetty.

The Heads

The Heads has always been notorious for its difficult passage and has claimed numerous ships like the ship 'Peregrine' in 1903.

The Heads

The Heads has always been notorious for its difficult passage and has claimed numerous ships like the ship 'Peregrine' in 1903.

Outeniqua Yellowwood *Podocarpus falcatus*

Medium-tall to very tall. Under favourable conditions reaching 30 to 45m and 600 to possibly 1000 years. Long and straight, cylindrical, but often strongly fluted in old giant trees. Bark dark brown, scaling off in large flakes. Crown usually high above the forest canopy. Abundant in moist and medium-moist forests. **Protected species: National Forests Act, 1998**

Hard Pear *Olinia ventosa*

Small to tall tree, 8-25m. Trunk long and cylindrical, but conical with strong flutings in old trees. Bark dark grey and fissured in squares and rectangles in the more common form, but reddish brown and flaky in an apparent old age form of big trees). Crown large and spreading. Abundant in dry forest types, less numerous but a tall tree in medium-moist forests, absent in moist and wet types.

...FOR A SUSTAINABLE FUTURE